

# Board to Board

pitch 1.00x1.45mm (0.039"x0.057") | Male | S.M.T.

GBCC248 Series

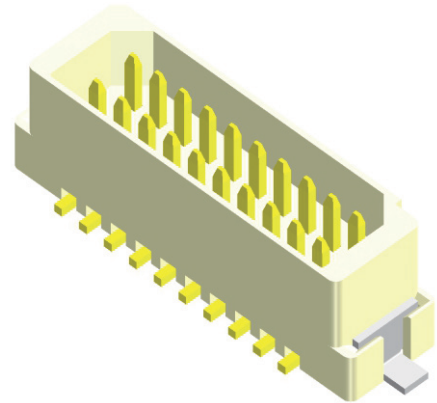
## Specifications

Current Rating : 1.0 Ampere  
 Insulation Resistance : 1000 MΩ Min  
 Dielectric Withstanding : 300V AC  
 Contact Resistance : 20 mΩ Max  
 Operating Temperature : -40°C to +105°C

## Materials

Contact Material : Phosphor Bronze  
 Insulation Material : High Temperature Thermoplastic, 94V-0 Nylon

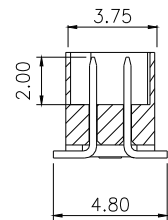
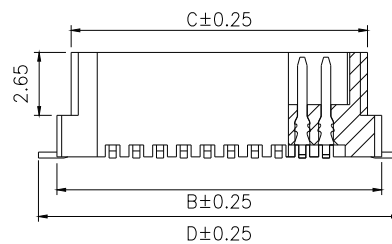
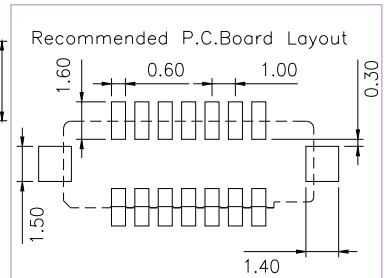
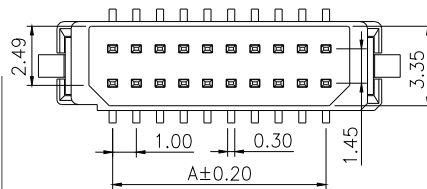
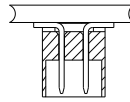
All materials must meet Greenconn's requirements for environmental protection.



## Mating with



B04



\* For Coded Dimension Not Inside The Table, Please Refer To "Ordering Information"

No. of Pins/Row	Dimension Information				No. of Pins/Row	Dimension Information			
	A	B	C	D		A	B	C	D
03	2.00	6.70	5.50	8.26	11	10.00	14.70	13.50	16.26
04	3.00	7.70	6.50	9.26	12	11.00	15.70	14.50	17.26
05	4.00	8.70	7.50	10.26	13	12.00	16.70	15.50	18.26
06	5.00	9.70	8.50	11.26	14	13.00	17.70	16.50	19.26
07	6.00	10.70	9.50	12.26	15	14.00	18.70	17.50	20.26
08	7.00	11.70	10.50	13.26					
09	8.00	12.70	11.50	14.26					
10	9.00	13.70	12.50	15.26					

## Ordering Information

GBCC2

Height Option (H) Standard

-

No. of Pins per Row

?

Standard Plating

: Gold Flash

Selective Plating

: Tin

Standard Packaging : Tube